

Clean Up Australia Day
 5 March 2017
Business Clean Up Day
 28 February 2017
Schools Clean Up Day
 3 March 2017



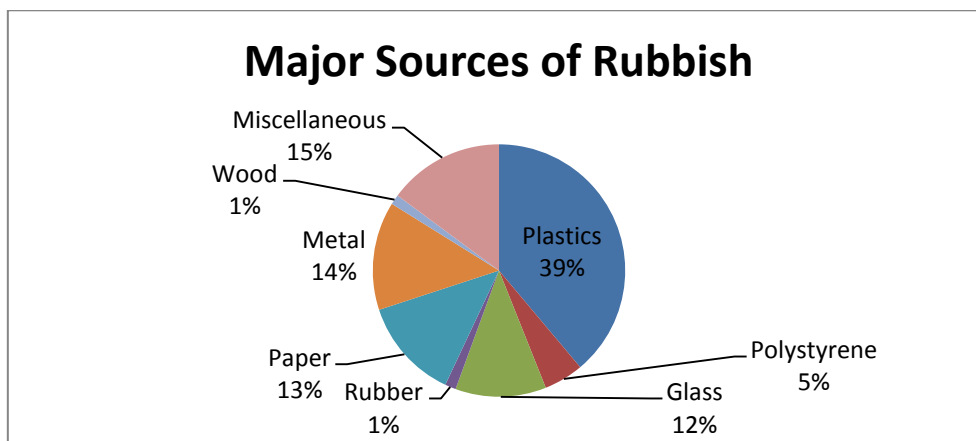
MAJOR PARTNERS



2016 RUBBISH REPORT- NATIONAL

Sites Registered: 6,795 [6,230 in 2015]
Estimated Volunteers: 562,697 [536,423 in 2015]
Estimated Rubbish Removed: 15,312.28 tonnes [15,914.8 in 2015]
Volunteer hours: 1,125,394 [1,072,566 in 2015]

The 2016 Rubbish Report is a snapshot of rubbish removed by Clean Up Australia Day volunteers. Nationally, the Report is based on rubbish surveyed from 602 sites.



NOTABLE CHANGES FROM 2015

- Plastic items increased by 4% [36% in 2015]
- Polystyrene, glass, paper, miscellaneous items and rubber remained consistent
- Metals reduced by 2%, wood by 1%

THE TOP 10 RUBBISH ITEMS AS A PERCENTAGE OF THE TOTAL RUBBISH SURVEYED

GROUPED DATA

	Item Description	%
1	Beverage containers	23.9
2	Non-food packaging	23.3
3	Food packaging	14.7
4	Chip and confectionery wrappers	8.0
5	Plastic bags	5.4
6	Beverage related rubbish	7.3
7	Household items	4.8
8	Non identified items	3.0
9	Sanitary items	2.1
10	Construction materials	2.0

INDIVIDUAL ITEM COUNT

	Item Description	%
1	Cigarette Butts	8.6
2	Plastic chip & confectionery wrappers	5.6
3	Garbage/rubbish bags	5.5
4	Alcoholic beverage bottles	4.9
5	Soft drink cans	3.9
6	Soft drink bottles	3.7
7	Alcoholic beverage cans	3.3
8	PET bottles	3.0
9	Plastic bottle caps & lids	2.7
10	Foil chip & confectionery wrappers	2.4

PARTNERS



SUPPLIERS



Clean Up Australia Day

5 March 2017

Business Clean Up Day

28 February 2017

Schools Clean Up Day

3 March 2017



MAJOR PARTNERS



INTERESTING FACTS

- Grouped Top 10 data made up 94.6% [97% in 2015] of reported rubbish. Individual Item Count Top 10 data = 43.6% [47.2% in 2015]
- Within grouped data, beverage containers which would have been covered by a container refund scheme increased their count by 0.3% to 23.9% of the whole rubbish count [23.6% in 2015]. Within the Top 10 individual item count this group represented 18.8% of total rubbish reported – a 9.9% decrease over 2015 [28.7%]
- Alcoholic beverage cans increased their individual count by 0.9%. Soft drink bottles made the Top 10 individual count for the first time.
- PET bottles decreased their count by 0.5%, soft drink cans by 0.9% and Alcoholic beverage bottles by 0.7%.
- Cigarette butts decreased by 3% over 2015 findings
- Plastic bags remained in the Grouped Top 10 this year, representing 5.4% [5% in 2015]. Garbage/rubbish bags represented 5.5% of the individual count, a 2.8% increase on last year
- Confectionery wrappers increased by 1.3% within grouped data; with plastic confectionery wrappers increasing by 1% and foil wrappers making a comeback at 2.4% of the individual count.

THE MOST POLLUTED SITE

Site Type	Number of site	Number of items found	% of states total waste	Average number of items per site
Waterways	88	26280	17%	299
Parks	123	28721	19%	234
Beach/Coastal	105	17412	12%	166
Roadway	111	31319	21%	282
Bushland	54	12738	8%	236
School Grounds	163	21489	14%	132
Outdoor Transport	7	2011	1%	287
Shops/malls	9	1691	1%	188
Dive Site	1	52	0%	52
Other	39	8645	6%	222

While School grounds were the most popular site surveyed in 2016, the highest average number of rubbish items per site [299] was recorded from waterways. This count was 20 per site lower than in 2015.

Other changes from 2015:

- All locations decreased their average count in 2016:
 - Parks decreased to 234 across 123 locations [282 from 215 locations in 2015]
 - Beach/coastal decreased to 166 across 105 locations [357 across 98 last year]
 - Bushland area counts reduced to 236 across 54 sites versus 301 items across 114 sites in 2015
 - School grounds reported 47.2% reduction in their average item count in 2016 = 132 from 163 sites [250 from 81 locations in 2015]
 - Roadways reduced their average count by 45 per location [average of 327 across 174 sites last year]
 - Outdoor transport locations reduced their average count by 52.5% [average 604 from 3 locations in 2015]
 - Shops/mall average counts reduced 44.1% to be 188 across 9 sites this year
 - Dive site counts reduced by 57.4% [2015 average counts = 122 across 2 locations]
 - 39 non identified locations reported an average of 4 less in 2016 [236 items from 52 locations in 2015]

PARTNERS



SUPPLIERS

